

# Dual

## XGPS150A Universal GPS Receiver with Bluetooth® Wireless Technology



### Wirelessly adds GPS to iPad models plus:

- iPod touch, iPhone & Android smartphones
- Bluetooth-enabled tablets & laptops
- 8+ hour run time + DC power option
- Includes non-slip holder
- High-sensitivity WAAS receiver works even through heated windshields

What can you do with it?



Aviation



Marine  
Navigation



Cycling /  
Running / Fitness



Social  
Networking



Car  
Navigation



What's  
Nearby?



Hiking /  
GPS Tracking



Golfing



Geocaching



Shown on glare shield in cockpit,  
inside the included non-slip pad

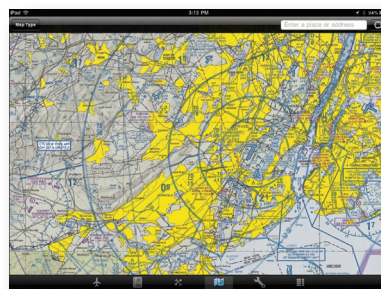


GPS Receiver shown in a car,  
inside the included non-slip pad



Small, portable design  
(2.25" x 2.25" x .75")

Ideal for  
EFB apps.



**Go Ahead.  
Explore**



# Dual

## XGPS150A Universal GPS Receiver with Bluetooth® Wireless Technology

### Features

- The high-sensitivity GPS Receiver works with most apps that require GPS
- Wirelessly connects to devices via Bluetooth
- For use with iPad, iPad2, iPod touch, iPhone and other Bluetooth-enabled devices including Android, Blackberry, and Windows smartphones, tablets and laptops
- Rechargeable Battery powers the GPS for up to 8.5 hours of continuous use
- Bluetooth auto-discovery for easy pairing of devices
- Auto power off to save battery when not in use
- BT and GPS indicator lights
- Touch-switch on/off
- Easy charging via the included USB cable and 12-30V charger
- Includes non-skid pad for use in a car (splashproof when inserted in pad's pocket - suitable for marine use)
- Includes 2-piece adjustable strap for use as an arm band or to attach to backpack

Device	Benefits
iPad with Wi-Fi	<ul style="list-style-type: none"><li>• Provides GPS capabilities to the iPad</li><li>• Does not interfere with the 30-pin connector allowing the use of other accessories and charging</li><li>• Allows the device to be used with apps that requires GPS</li></ul>
iPod touch	<ul style="list-style-type: none"><li>• Provides GPS capabilities to the iPod touch</li><li>• Allows the device to be used with apps that requires GPS</li><li>• Does not interfere with the 30-pin connector allowing the use of battery packs and other accessories</li></ul>
Most Bluetooth-enabled smartphones (Android, Blackberry & Windows)	<ul style="list-style-type: none"><li>• Adds GPS capabilities to phones without built-in GPS</li><li>• Allows the device to be used with apps that requires GPS</li><li>• Saves phone's battery life by not using the internal GPS</li></ul>
Laptops and Tablets (Android, Windows & OS X)	<ul style="list-style-type: none"><li>• Provides GPS capabilities</li><li>• Allows the device to be used with software that requires GPS</li></ul>

**Go Ahead. Explore**

[www.XGPS150.dualav.com](http://www.XGPS150.dualav.com)

