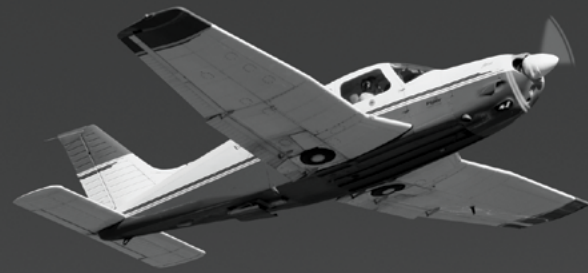


1-AXIS
OR 2-AXISFITS
3" ATI

EXPANDABLE

EASY
UPGRADES

System Forty & Fifty

Economical autopilots with three ATI-size, panel-mounted mode selector/programmer/annunciators

1-Axis or 2-Axis: Choose the capability that fits your flight profile requirements.

Fits 3" ATI: Conserve valuable panel space.

Expandable: Start with basic functions and easily add functionality like GPSS and Yaw Damper.

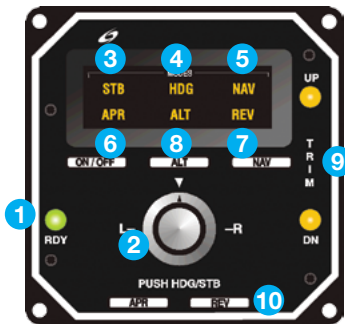
Easy Upgrades: Simple upgrade from System 40 to System 50 for greater capabilities. Easy migration path to the higher performance of System 55X.

Advanced features

- 3" ATI panel-mounted
- Internal lighting
- Roll axis computer three ATI case-contained
- Heading preselect and hold**
- Turn command in "STB" roll stabilization mode
- Low and high gain VOR/LOC/GPS tracking (track only)
- Back course (REV) mode
- And much more

System Forty & Fifty

Economical autopilots with three ATI-size, panel-mounted mode selector/programmer/annunciators

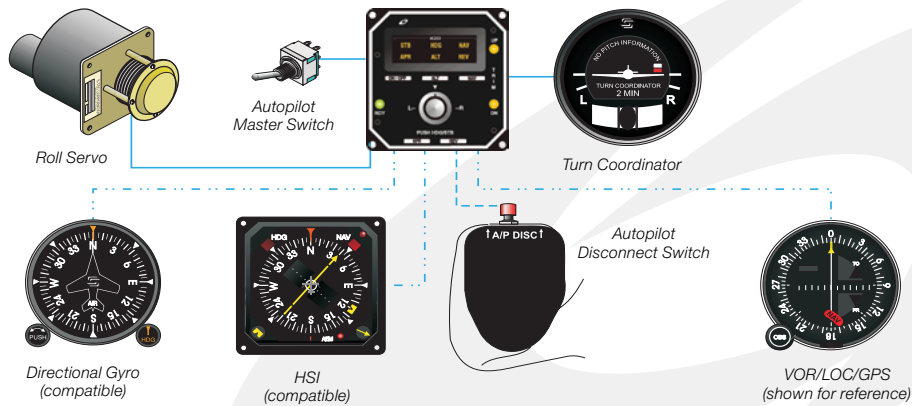


- 1 Ready. Indicates A/P ready status and reliable gyro speed.
- 2 Multi-function control knob. Turn command, or push to select heading hold or roll stabilization mode.
- 3 Roll stabilization mode. Holds wing level and enables command knob for A/P commanded turns up to 90% standard rate.
- 4 Heading preselect and hold.**
- 5 NAV/LOC/GPS tracking. Dual gain NAV for en route tracking and smooth station passage.

- 6 APR for GPS en route, and LOC, VOR & GPS approaches.
- 7 REV for backcourse approaches.
- 8 Altitude hold.*
- 9 Pitch trim annunciator. Advises if up or down elevator trim required with altitude hold engaged*
- 10 Mode selector buttons.

* System Fifty features and functions

System Forty



System Forty: features and functions

- 3" ATI panel-mounted
- Internal lighting
- Roll axis computer three ATI case-contained
- Heading preselect and hold**
- Turn coordinator in "STB" roll stabilization mode
- Low and high gain VOR/LOC/GPS tracking (track only)
- Back course (REV) mode

System Fifty: features and functions

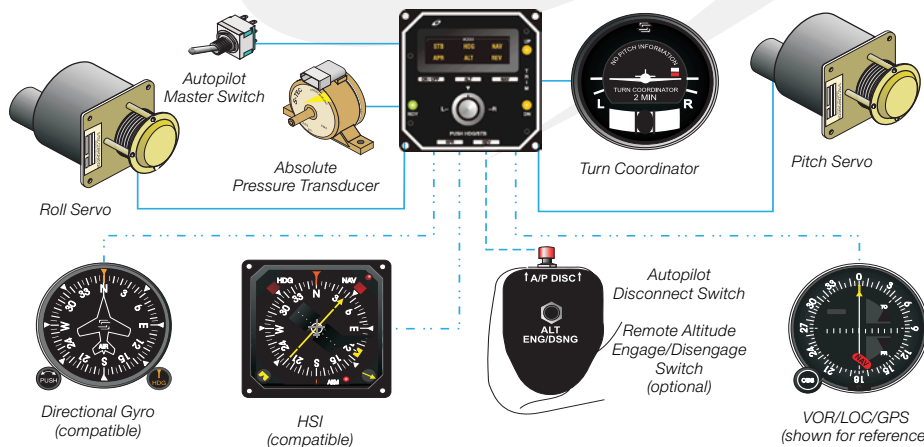
- Same roll features/functions as System Forty
- Altitude hold (only)
- Pitch axis computer three ATI case-contained
- Pitch trim annunciation

Options

- Control wheel altitude mode select
- GPSS (GPS Steering) converter
- DG / HSI compatible
- Manual electric trim (where STC'd)
- Yaw Damper

**Operational if heading system (e.g., DG with heading bug) is installed and active.

System Fifty



PRECISE PERFORMANCE.
PROVEN EXPERIENCE.
PERSONALIZED ATTENTION.